



DENNIS G. MEYER, LS 4751  
LICENSE EXPIRES: 9/30/11  
DATE

ANDREGC GEOMATICS

SURVEYORS STATEMENT

I CERTIFY THAT I SUPERVISED THE SURVEY OF THE PROJECT LANDS, THAT THE PROJECT BOUNDARY DELINEATION FOR THE MIDDLE FORK AMERICAN RIVER PROJECT AS SHOWN ON THIS EXHIBIT "G" IS DEVELOPED WITHIN REASONABLE ACCURACIES AS REQUIRED IN 18CFR4.39 & 18CFR4.41 TO THE GEOGRAPHIC LOCATION. THIS EXHIBIT IS BASED UPON MAPS OF THE EXHIBIT "K", SHEET 12 OF THE MIDDLE FORK AMERICAN RIVER PROJECT NO.2079 AND BOOK 2 SURVEY OF THE MIDDLE FORK AMERICAN RIVER PROJECT NO.2079 AND CORRECTED SHOW HEREON. SEE CONTROL SCHEME FOR DETAILS OF THE BOUNDARY DELINEATION AND DATA ACQUISITION.

NOTES

SHADED TOPOGRAPHY SHOWN HEREON PER EXHIBIT "K", SHEET 12, MIDDLE FORK AMERICAN RIVER PROJECT; HELL HOLE RESERVOIR PROJECT AREA, REVISED OCT. 20, 1977

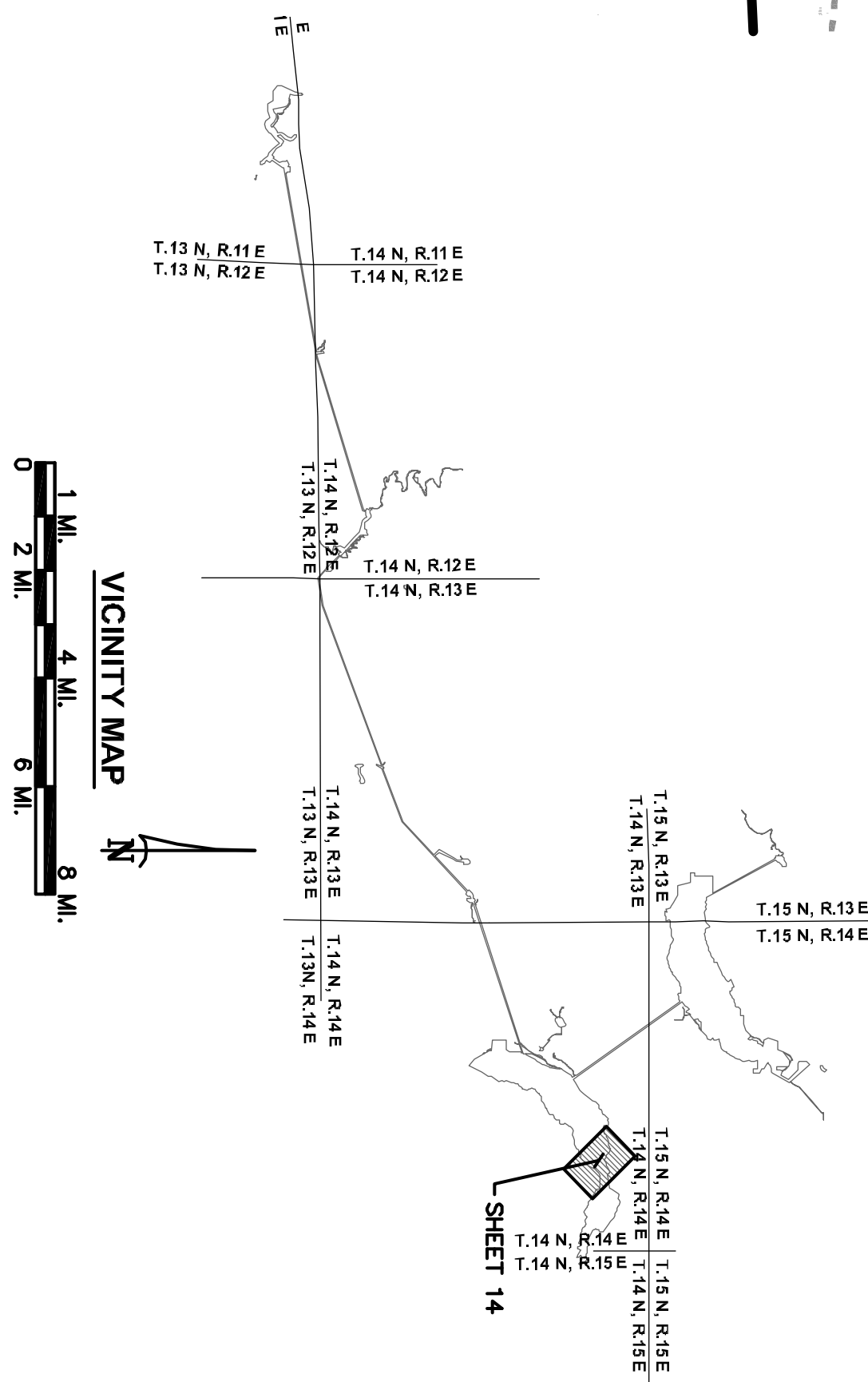
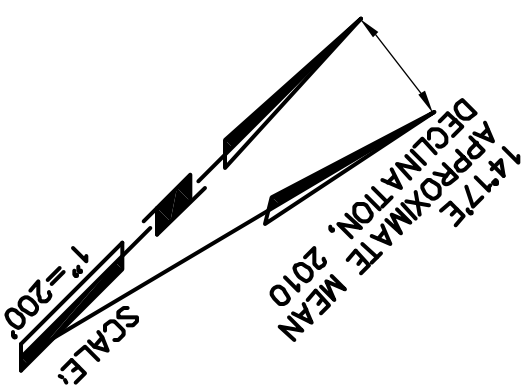
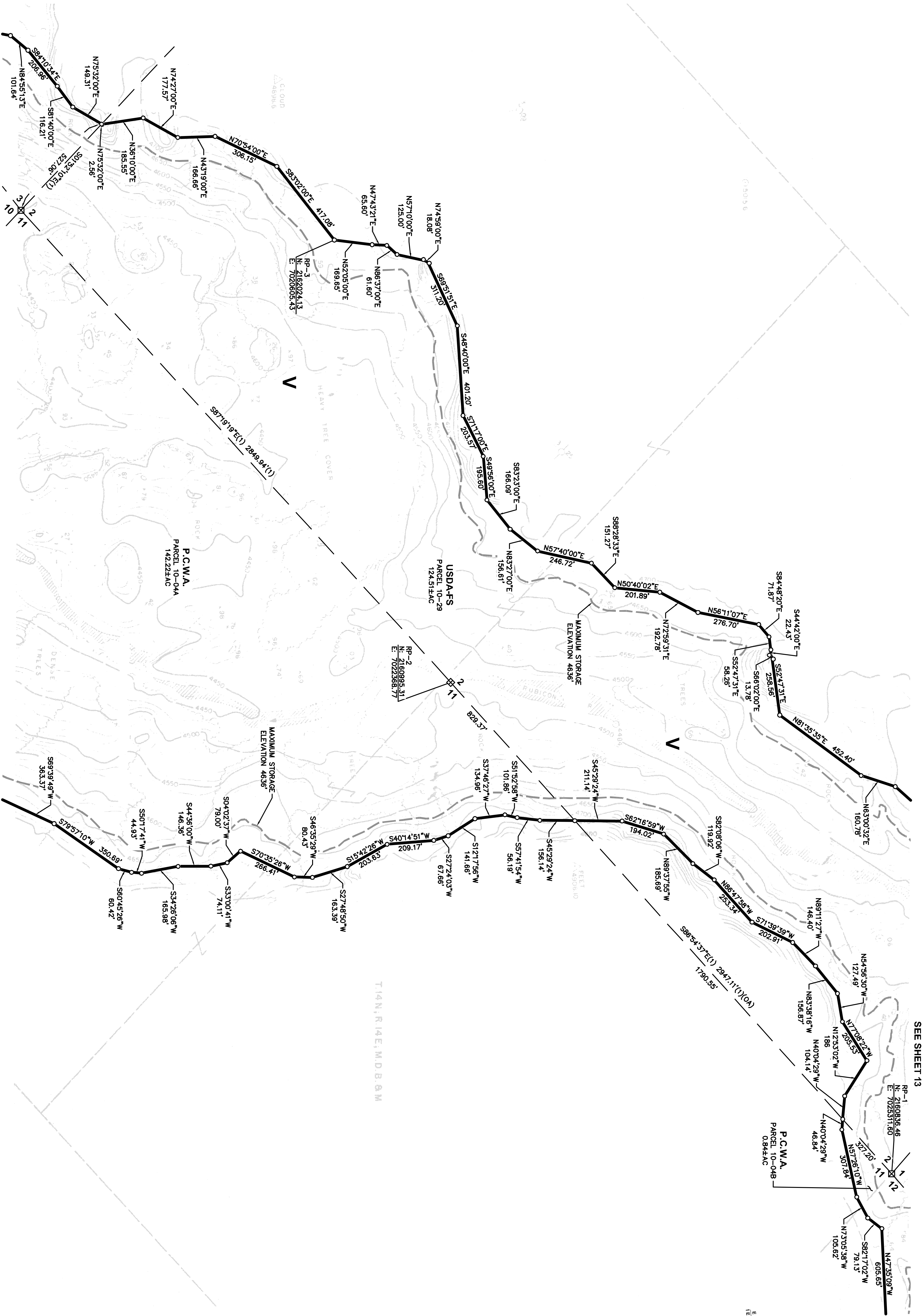
ALL FACILITIES AND FEATURES SHOWN HERE ON ARE PER DATA COLLECTED BY OTHERS

MAXIMUM STORAGE ELEVATION CONTOUR OF 4635' PROVIDED BY OTHERS.

REFERENCE POINT COORDINATES

NAD83 CALIFORNIA STATE PLANE COORDINATE SYSTEM ZONE II (CCS83, ZONE 2);  
U.S. SURVEY FEET

SEE SHEET 15



LEGEND

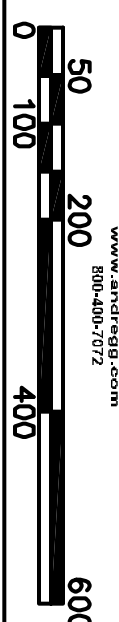
- PROJECT BOUNDARY
- RESERVOIR STORAGE STAGE
- TUNNEL (WITH SHAFT)
- SECTION LINE, ESTABLISHED
- SECTION LINE, PROTRACTED
- SUBDIVISION LINE, GOVERNMENT LAND SURVEY
- SECTION CORNER, FOUND
- SECTION CORNER, RECORD
- 1/4 CORNER, FOUND
- 1/4 CORNER, RECORD
- COUNTY LINE
- U.S. FOREST BOUNDARY
- PROJECT BOUNDARY CORNER
- OVERALL DIMENSION
- RP
- PUBLIC LAND
- ROAD
- BRIDGE
- RIVER OR PERENNIAL STREAM
- INTERMITTENT STREAM
- SPRING
- POND OR LAKE, WATER LEVEL JULY 1961
- TREES OR BRUSH
- STREAM FLOW GAGING STATION
- WATER SURFACE GAGING STATION
- CAMPGROUND
- BUILDING
- GOVERNMENT BENCH MARK
- BENCH MARK RELOCATION
- PHOTOGAMMETRIC PRINCIPAL POINT
- TRIANGULATION STATION
- FIELD ESTABLISHED ELEVATION
- PHOTOGAMMETRIC ELEVATION
- MINERAL RIGHTS ONLY
- RECORD PER 2 ROS 78

EXHIBIT 'G' PROJECT 2079

MIDDLE FORK AMERICAN RIVER PROJECT  
HELL HOLE RESERVOIR PROJECT AREA  
A PORTION OF SECTIONS 1, 2, 11 & 12, T14 N, R14 E, M.D.M.

PLACER COUNTY, CALIFORNIA  
SCALE: 1"=200' FEBRUARY 11, 2011

ANDREGC  
GEOMATICS



SHEET 14 OF 33